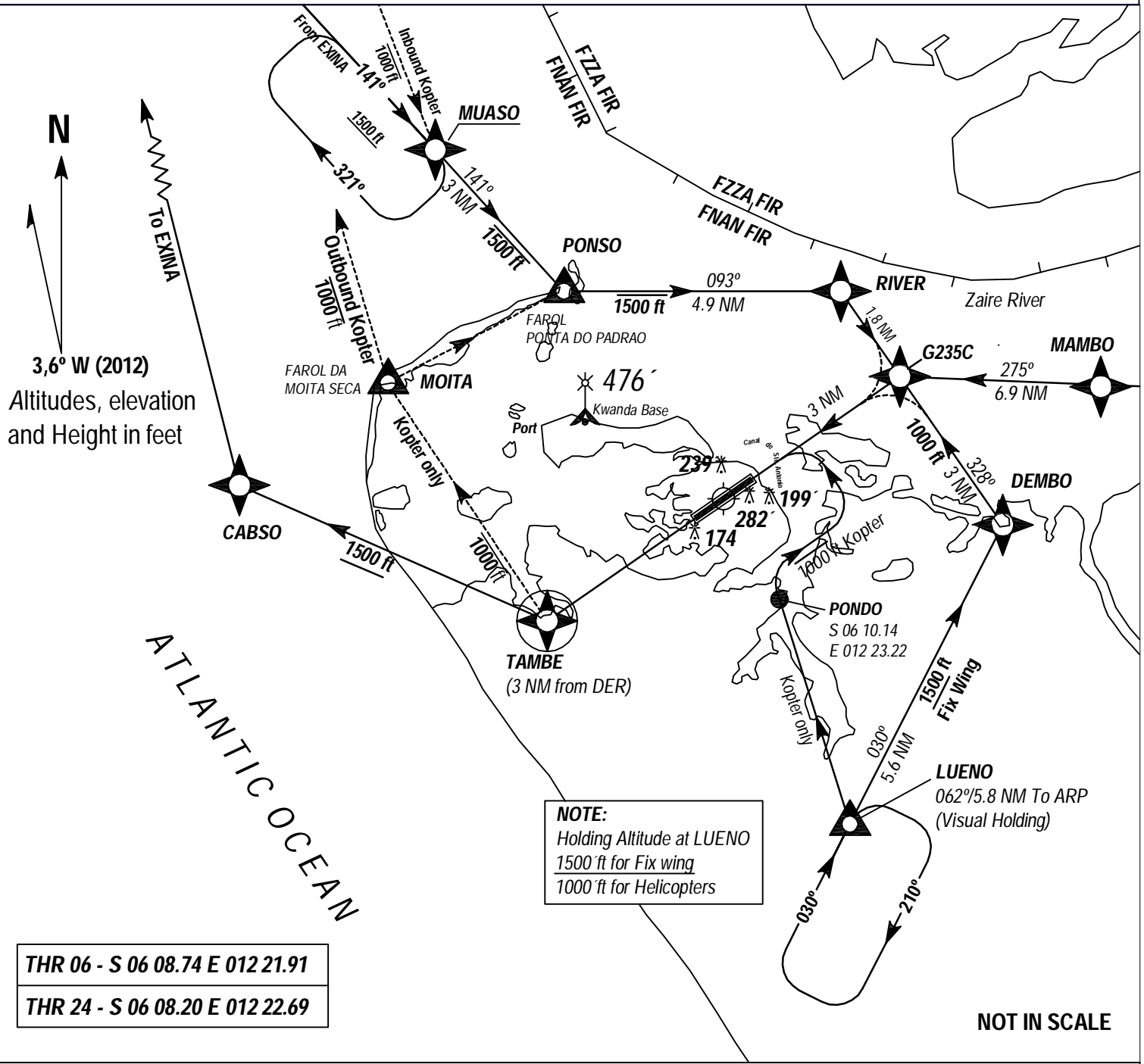


**VISUAL  
APPROACH CHART  
FNSO**

**AD ELEV. 30 ft  
ARP S 06 08 28 E 012 22 18**

**TWR  
VHF 118.8  
HF 6884**

**SOYO AERODROME  
SOYO - ANGOLA  
VISUAL (GNSS)**



**THR 06 - S 06 08.74 E 012 21.91**  
**THR 24 - S 06 08.20 E 012 22.69**

- Notes:**
- Traffic approaching from North fly South side of the ZAIRE course river to avoid the Traffic departing from Muanda and Kitona Base in the proximity of the FIR boundary FNaN / FZZA.
  - Pilots are **Not authorized** to overfly the Kwanda Base due to highly flammable Gaseous burning.

**WAYPOINT DATA - VISUAL GNSS PROCEDURES**

<b>TAMBE</b> - S 06 10.50 E 012 19.38	<b>RIVER</b> - S 06 04.98 E 012 24.24
<b>CABSO</b> - S 06 08.22 E 012 14.22	<b>G235C</b> - S 06 06.42 E 012 25.26
<b>MOITA</b> - S 06 06.54 E 012 16.68	<b>DEMBO</b> - S 06 08.90 E 012 27.00
<b>MUASO</b> - S 06 02.64 E 012 17.52	<b>LUENO</b> - S 06 13.89 E 012 24.41
<b>PONSO</b> - S 06 04.98 E 012 19.62	<b>MAMBO</b> - S 06 06.72 E 012 32.16