

**INSTRUMENT
APPROACH
CHART - ICAO**

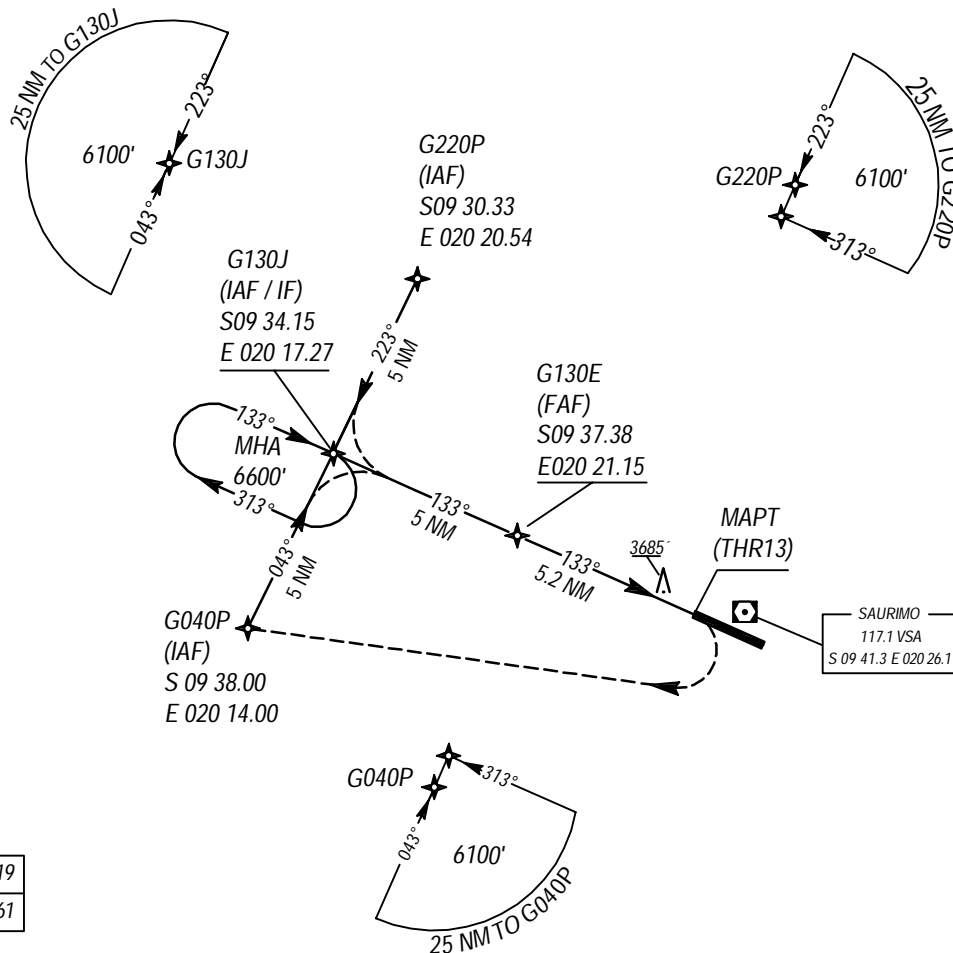
AERODROME ELEVATION 3585'
HEIGHT RELATED TO
THR RWY13 - ELEV 3596'

TWR 118.1

Saurimo, ANGOLA
SAURIMO Airport
RNAV (GNSS) RWY 13
CAT A, B, C, D



Bearings are Magnetic
Altitudes elevations
and Heights in Feet

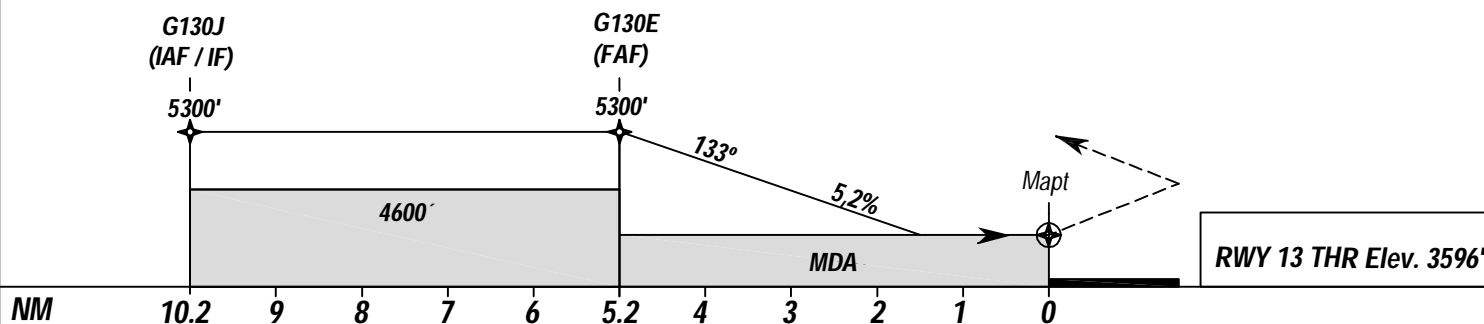


| | |
|--------|------------------------|
| THR 13 | S 09 40.74 E 020 25.19 |
| THR 31 | S 09 41.92 E 020 26.61 |

NOT IN SCALE

MISSED APPROACH: At Mapt turn right climbing to 6100' FT
proceeding to G040P or as directed by ATC

Transition Altitude 6600'



RWY 13 THR Elev. 3596'

| CAT | MDA (H) - LNAV | | | |
|-------------|----------------|---|--------------|---|
| | A | B | C | D |
| Straight in | 4070' (480') | | | |
| Circling | 4090' (505') | | 4380' (795') | |

| Distance to THR | 5.2 NM | | | | | |
|-----------------|--------|------|------|------|------|------|
| Speed (Kt) | 80 | 100 | 120 | 140 | 160 | 180 |
| Time (min/s) | 3:54 | 3:07 | 2:36 | 2:19 | 1:57 | 1:43 |
| Rate (FT/min) | 424 | 530 | 636 | 741 | 847 | 953 |