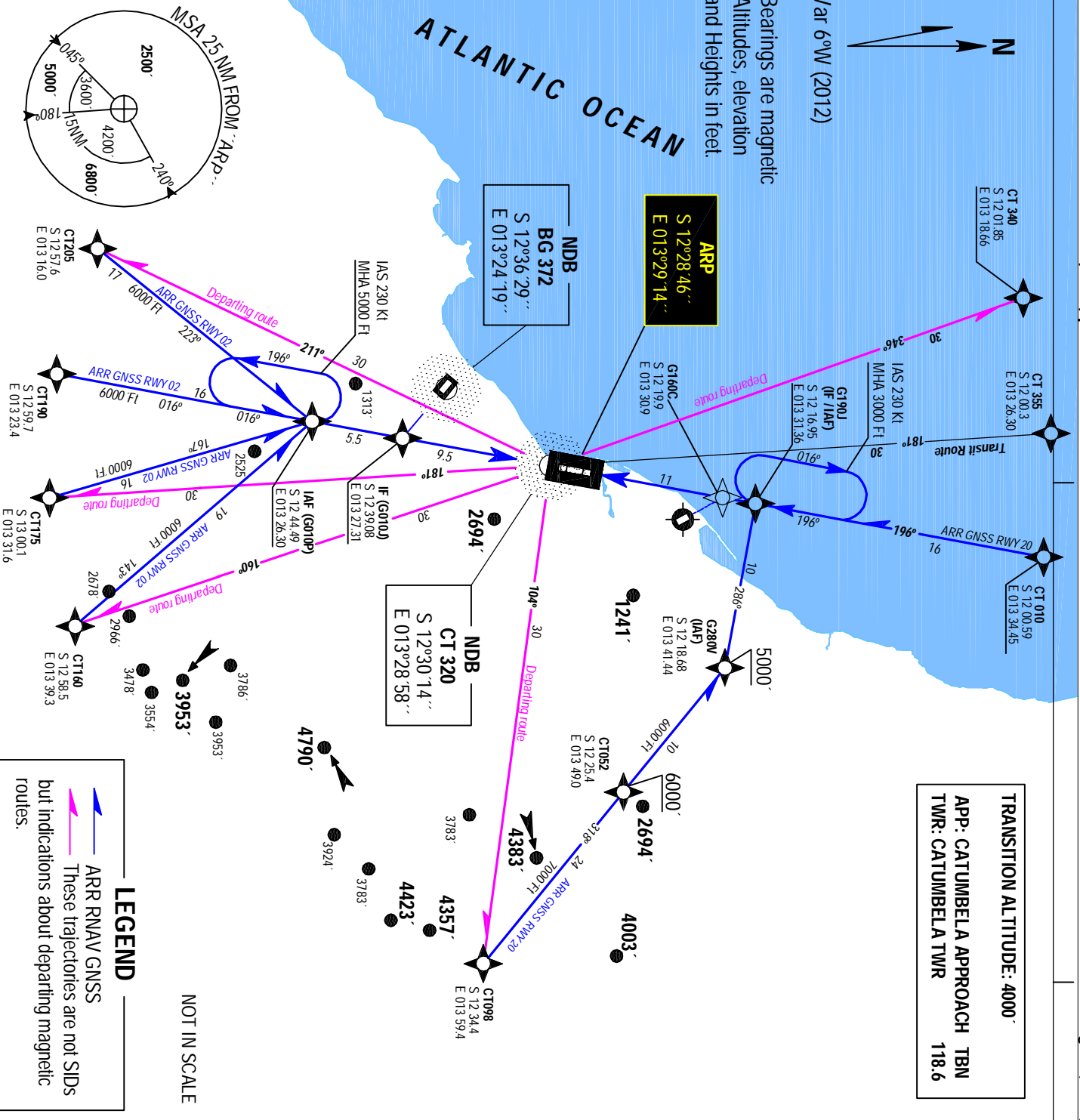


Var 6°W (2012)

Bearings are magnetic
Altitudes, elevation
and Heights in feet.



TRANSITION ALTITUDE: 4000'

APP: CATUMBELA APPROACH TBN

TWR: CATUMBELA TWR 118.6

LEGEND

- ARR RNAV GNSS
- These trajectories are not SIDs but indications about departing magnetic routes.

NOT IN SCALE

